

K-State Research & Extension Greenwood County 4-H News

4-H is an organization that grows great kids!

Kansas State University Agricultural Experiment Station and Cooperative Extension Service ✕ April 2025



April

- 1 Judy Wiggins Scholarship applications due
- 1 Trophy Donor money & list due to Ext. office
- 5 Entomology Project Meeting, 1:00pm @ Allen County Extension Office
- 11 Kansas Maid Order Pick Up at Extension Office
- 15 K-State Animal Science Leadership Academy applications due (click [here](#) for more information as the website is updated!)
- 20 Market Beef DNA envelope order deadline
- 22 County-wide Photography Project Meeting
- 22 YQCA Training @ courthouse, 6:30pm
- 26 Livestock registration papers due to Ext. Office
- 26 Small Animal Weigh-In
- 26 Fairgrounds Clean-up w/Small Animal Weigh-In
- 27 Flint Hills Classic

May

- 1 Market Beef Nominations post-mark deadline
- 1 4-H Online new member enrollment deadline
- 1 4-H Online Project Add/Drop deadline
- 14 County 4-H Camp, 6pm @ Memorial Hall
- 19 4-H Council Meeting @ 7pm in Neal
- 28 Rabbit Showmanship Clinic @ 6pm fairgrounds
- 30 Horse ID Papers due to Extension Office

June

- 1 FairEntry Opens!
- 3 SE Area Livestock contests – Iola
- 4-6 Discovery Days
- 5 Small Livestock DNA envelope order deadline
- 10-13 Kansas Range Youth Camp
- 11-14 K-State Animal Science Leadership Academy
- 12 SE Area Contests—Emporia
- 13 GW Co Fair Shooting Sports entries due in FairEntry
- 15 Small Livestock & Commercial Heifer Nominations deadline
- 21 Multi-County 4-H Dog Show
- 21 GW Co Fair Archery Competition @ 9 am
- 26 Poultry banding and P-T Testing @ 5:30 pm
- 29 GW Co Fair Shotgun Competition @ 4 pm
- 27-28 Insect Spectacular—contact office for more info
- 29 Shooting Sports Banquet @ 7 pm

Kansas Maid Fundraiser

Thank you to all the 4-Her's for an amazing job with the Kansas Maid Fundraiser! The Greenwood County 4-H Foundation thanks you all for your hard work and dedication! 4-H'ers raised \$4,500 this year! The money will be put towards fair expenses and fair ground improvements.

The 5 top sellers were:



- * Savannah Bruno-Pelky
- * Stella & Margot Shivers
- * Tyler, Katelyn & Tessa Nutsch
- * Brynn Roth
- * Clay, Bryce & Freya Teter

4-H Online

The deadline for new members to Enroll and the Add/Drop date for 4-H projects for all members on Kansas 4-H Online is Wednesday, May 1st. Leaders and volunteers must be enrolled on 4-H online.



**** Check out the results for Greenwood County 4-H County & Regional Club Days [HERE!](#) ****

Trophy Donors

Be sure to have Trophy Donor money into the Extension Office by Monday, April 1 so we can get the Donor names put into the Fair Book.

Small Animal Weigh-In

Weigh-in and tag for swine, sheep, meat goats, and buck-et calf is Saturday, April 26th. Tags are \$4 each.

Approximate weigh-in schedule:

- 8:00am Hogs
- 9:30am Goats
- 10:00am Sheep
- 10:30am Bucket Calves

Flint Hills Classic

The Flint Hills Classic will be held on Sunday, April 27th. The 4-H Council voted to host a concession stand during the Flint Hills Classic Livestock show. All that is needed is the help of 4-H club members and some adult volunteers to operate the concession stand. 4-H Council has assembled the following schedule for clubs to come and help. Approximately two (2) adults and five (5) 4-Hers are needed for each shift. The 11:00am - 12:30pm shift will need an additional 1-2 helpers. All proceeds from the concession stand will benefit the Greenwood County 4-H Foundation, and will be used to improve fairground facilities.

Concessions Schedule:

- * 6:30am – 8:00am Fancy Mustangs
- * 8:00am – 9:30am Fall River 55'ers
- * 9:30am – 11:00am Harmony Sunflowers
- * 11:00am – 12:30pm Racing Wranglers
- * 12:30pm – 2:00pm Willow Valley Go-Getters
- * 2:00pm – 3:30pm Madison Pacesetters

2025 Market Beef Nomination Information

Market Beef Nomination must be postmarked by Thursday, May 1st. Please see nomination information at www.YouthLivestock.KSU.edu

All 2025 state livestock nomination information will be posted on the "Nomination Information" tab of the KSU Youth Livestock website.

Important: All animals that are nominated for the Kansas Junior Livestock Show and Kansas State Fair will be required to be tagged with the Kansas 4-H EID tags in 2025. DNA hair samples in official DNA envelopes are also required.

**Exhibitors must contact their local Extension Office to get their animals tagged and further details on state nomination.



Horse ID Papers

Horse ID's are due in the Extension Office by Friday, May 30th. Get one here: <https://www.bookstore.ksre.k-state.edu/pubs/P1039.pdf> or pick one up at the Extension Office

The Kansas 4-H horse rule book may be found [here](#).

⇒ **Horse Ownership:** Youth may own the horse themselves, or use a family-owned horse (immediate family: parent, stepparent, sibling, grandparent, or legal guardian).

⇒ **Leasing:** The leasing option is intended for youth who do not have access to family-owned horse or who want to expand their participation in the 4-H Horse Project, provided that they manage the horse at least 75% of the time from June 1 through September 30. If a 4-H member leases his or her project horse to another 4-H member, the lessor forfeits the right to use the horse.

⇒ **Sharing Project Horses:** The names of all siblings who intend to show the horse must be listed on the 4-H Horse Identification submitted on or before June 1st. Youth may exhibit the same horse; however the horse cannot participate in the same class in the same age division more than once at a given show. Youth can be in same age division, but they will have to participate in different classes. Youth must share management of the horse.

4-H Dog Project Training Sessions



Greenwood County 4-H Dog Project will help you elevate your skills and your own knowledge and prepare both you and your dog for competitions at the 4H Dog Shows. Starting April 30th at the Fairgrounds, weekly sessions will offer training in Showmanship, Rally/O, and Obedience. Build stronger bonds, get better obedience, and learn techniques in training and handling your dog. All age levels and experience levels are Welcome. For more information and to sign-up, contact Suellen Appellof at (907) 841-4713 or suellen.appellof@gmail.com.

Record Books and Pin Applications

It's never too early to start working on record books & pin applications. In fact, it's much easier to work on throughout the year. Pin applications have been updated this year. Check those out, as well as helpful trainings for record keeping via project report forms on Adobe and ZBooks [HERE](#).

K-State Animal Science Leadership Academy

For more information and to register go [HERE](#).

Discovery Days

Kansas 4-H Discovery Days is planning to be in-person on KSU campus!

When: June 4th - 6th, 2025

Who: Youth ages 13 - 18 before January 1, 2025 are invited to register

Cost: \$225

Registration: Coming soon!

General Schedule: Can be found [HERE](#).

Discovery Days objectives:

- Help youth learn new ideas, techniques, and skills they can use personally and in their 4-H clubs or groups and communities
- Give youth in-depth training through hands-on educational sessions from content and youth development experts
- Prepare youth to make informed decisions about their careers and college path
- Enhance personal growth by giving opportunities to develop responsibility, confidence, independence, accountability, problem-solving, decision-making, and time management skills
- Help youth meet new people and make new friends from different places and with different backgrounds from across the state
- Provide an opportunity for youth to experience the K-State campus and its wealth of resources
- Develop college and career readiness skills which prepare participants academically and socially for a successful transition to college and life as an adult

Entomology Project Meeting



Our April Entomology project meeting will be on April 5th beginning at 1:00 p.m. at the Allen County Extension Office Meeting Room. We will be working on pinning insects so bring your pinning boards and pinning supplies as well as 2 or 3 insects to pin. Please bring a talk on an insect from Africa.

Questions: call Vicky at (620)804-9170.

Scholarships

Judy Wiggins Scholarship

The Judy Wiggins Memorial scholarship application will be due April 1st. Copies of the application are available by request from the Extension Office.

Kansas Range Youth Camp



For more information or to register, visit <https://www.kglc.org/range-youth-camp.cfm>

4-H Council Corner

Council Meeting will be held Monday, March 31st. Items to discuss include:

- Fair Building Watch Day/Times
- Trash duty times
- 4-H Day Camp

The next council meeting will be Monday, May 19th, in the Neal Community Building. Buyers' Meal, Community Service, Day Camp, & Fair Movie/Dance Committees should plan to meet prior to the May Council Meeting and be prepared to present upcoming plans.

Bring a Buddy for the 4-H Council May Meeting

Bring a buddy night! Each 4-H Council member should plan to bring one younger 4-H member with them to the May Council meeting. This is a great way to show our younger members what being a Council member entails and encourage them to want to join once they are old enough.

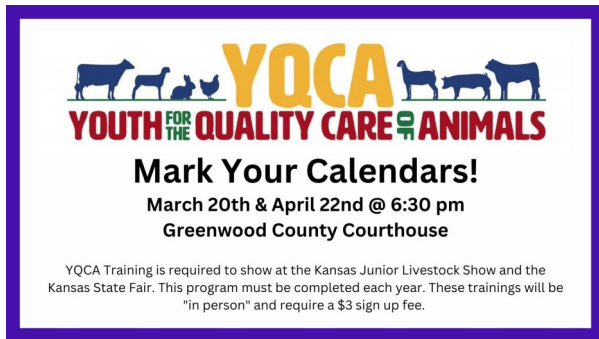
Poultry Banding & P-T Testing

All poultry exhibited at the fair must be identified with a leg band. Also, U.S. Pollorum-Typhoid testing is required this year. The date for banding and testing will be Thursday, June 26th at 5:30pm at the fairgrounds. If you are unable to make it, please make plans for your birds to be transported by someone.

Rabbit Showmanship Clinic

We are offering a rabbit showmanship clinic on Wednesday, May 28th at approximately 6 pm out at the fairgrounds. More details are to come.

YQCA Training



Other opportunities for In-Person YQCA Training:

- ◇ April 9 @ 6:30pm in El Dorado
 - ◇ April 23 in Sedan
 - ◇ May 28 @ 6:30pm in El Dorado
- ****Sign-up by logging into your YQCA account @ yqcaprogram.org and selecting only one session.****

Fair Concessions Stand

If any non-profit group associated with youth development would like to sign-up for a time to run the Concession Stand at the Fair as a Fundraiser, please contact the Extension Office.

Concessions Schedule:

Friday:

9a-2p EHS Cheerleaders
2-9p OPEN

Saturday:

9a-2p Madison FFA Boosters
2-9p Madison FFA Boosters

Sunday:

4-9p GW Co Shooting Sports

Dairy Goats at the County Fair!



There will be a Dairy Goat Division at the 2025 Greenwood County Fair. Detailed show rules will be released in the Fair Book on June 1st. Animals must be dehorned and debudded. Does must be ADGA or AGS registered. Registration papers or stamped duplicate registration applications will be required for all registered animals. Animal papers must be in the name of the 4-Hers by June 1 or show ownership by June 1 for grades. Each exhibitor is limited to 4 entries for the entire dairy goat show, with a max of 2 entries per age division (i.e. 2 Jr Does and 2 Sr. Does). Animals without registration papers or legible tattoos, will show with recorded grades, on a bill of sale. Those animals must also be identified by an official USDA Scrapie Premise I.D. tag. If you have any questions feel free to reach out to Agent, Ben Sims, by calling the office at 620-583-7455 or emailing him directly at ben-jam63@ksu.edu.

Lamb Lead-In Contest



It has been said that March comes in like a Lion and goes out like a Lamb. Hopefully that means calm and easy to lead for 4-Hers and others who might like to enter the Lamb Lead-In contest at the Greenwood

County Fair. This contest has been a popular and fun one and now is the time to think ahead for entering this year's event. The Lamb Lead-In contest is open to anyone, there are classes for 6 years and under, ages 7 - 9, 10 - 13, 14 - 18, and adult. It is listed in the Open Class section of the Fair paper and is open to 4-Hers and others. You don't have to own the lamb but early summer would be a good time to make friends with a lamb, and it's owner, to practice leading the lamb. Check with others in your club to see who might have a lamb you could borrow if you're not enrolled in the project. The lamb's head and/or neck may be decorated, but it may not be blanketed to cover it's body. The participant's outfit is also part of the entry and may be purchased or sewn and must be at least 60% wool. The Make It With Wool contest has had many entries from Greenwood County and there may even be an outfit you could borrow if you don't have one. Your outfit may be a sweater with slacks or jeans, a vest with jeans, a jumper, skirt or dress, or a suit. The judging will be held Sunday, July 27th during the Greenwood County Fair. Pre-entries may be made with open class and will also need a description of the garment and a narrative form for the show. Participants will be evaluated on how well they model their outfit and how well they show the lamb.

SEA Youth Challenge Day (SEA Regional Contest)

When: Thursday, June 12th

Where: Lyon County Anderson Building in Emporia

Contests available: Horticulture, Crops, FCS, Favorite Foods (for local winners), and Photography

Contact the Extension office if you would like a ride there that day!

2025 Greenwood County Fair Design

Thank you to the Madison Pacesetters for this year's fair design! The Greenwood County Fair is July 25th - 28th!



Leader's Notes

- ◆ **Volunteer Screening:** If you know of any 4-H volunteers that have not registered and gone through the screening process, please let the office know immediately! The Extension Office wishes to ensure that **ALL** Greenwood County 4-H Volunteers, both new and old, have gone through the appropriate steps of screening to be 4-H Volunteers. Per the Kansas 4-H Policy Handbook: It is a privilege, not a right, to be a 4-H Volunteer. These volunteers are expected to adhere to the Kansas 4-H Code of Conduct found [HERE](#). New volunteers must complete the initial steps of: 4-H Online profile creation, References, Criminal Background Check, Interview, Orientation, and Approval before they can serve as a 4-H Volunteer. All information must be kept current in the 4-H Online system. A Kansas 4-H Volunteer is defined as any "Adult providing direct supervision to youth at a 4-H program; making decisions on behalf of the 4-H program; having access to private data of 4-H youths or volunteers; and/or handling funds as part of 4-H and must complete the volunteer screening process, be accepted, and enrolled as a KS 4-H Volunteer." We need your help as leaders to ensure we are completing screening for all volunteers. Current volunteers should go through a rerunning of a Criminal Background Check every three years.
- ◆ **Premium Sale Rules:** The deadline to sign the Greenwood County Fair Premium Sale Rules for Livestock exhibitors is 4:30p on Friday, May 30th! In order to participate in the Greenwood County Fair Premium Sale, there must be a signed copy of these rules on file at the Extension Office.
- ◆ **County Fair 4-H Archery and Shotgun Shoots:** The dates are: Archery Contest Saturday June 21st, Shotgun shoot Sunday, June 29th, and Shooting Sports Banquet Sunday, June 29th. The banquet will be at the Concourse Building at the fairgrounds. Shooting sports entries will be due on June 13th in Fair Entry
- ◆ **Flint Hills Classic:** Sunday, April 27h - Fairgrounds clean-up will be Saturday, April 26th during Small Animal Weigh-In.

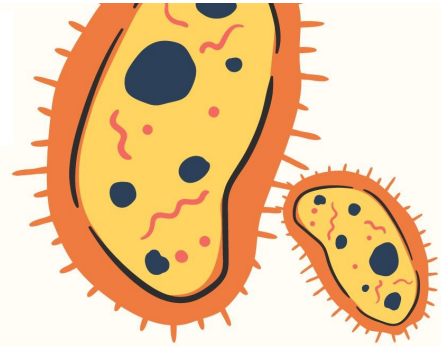
Concessions Schedule:

* 6:30am – 8:00am	Fancy Mustangs
* 8:00am – 9:30am	Fall River 55'ers
* 9:30am – 11:00am	Harmony Sunflowers
* 11:00am – 12:30pm	Racing Wranglers
* 12:30pm – 2:00pm	Willow Valley Go-Getters
* 2:00pm – 3:30pm	Madison Pacesetters



- ◆ **May 1st:**
 - * Last day to add/drop projects and for **new** members to enroll in 4-H Online
 - * Market Beef Nominations must be post-marked by this day
- ◆ **May 19th 4-H Council Meeting:**
 - * As a reminder this is also our buddy meeting for 4-H Council members to bring a younger 4-H member to expose them to 4-H Council.
 - * There will be a leaders' meeting at 6 pm before the Council meeting. We will discuss updates and upcoming dates related to 4-H. Please bring any questions you have for Alisha or Ben.
- ◆ **Fair Concessions Stand:** If any group (i.e. 4-H groups, Boy or Girl Scouts, church or school organizations, etc.) would like to sign-up for a time to run the Concessions Stand on Friday, July 25th (9am-2pm available) at the Fair as a Fundraiser, please contact the Extension Office.
- ◆ **Discovery Days:** Space is limited this year, so please inform club members that are planning to go to get registered as soon as possible. Also please let Ben know of their intentions to do so.
- ◆ **Fair Book Changes:** These have been emailed out to everyone. Please be sure to mention and direct your families to these changes.

K-STATE
Research and Extension



4-H SUMMER CAMP

WEDNESDAY, MAY 14TH
6:00PM-7:30PM
MEMORIAL HALL

Ages 5-9

Register by:
Calling (620) 583-7455 or
emailing alisha32@ksu.edu

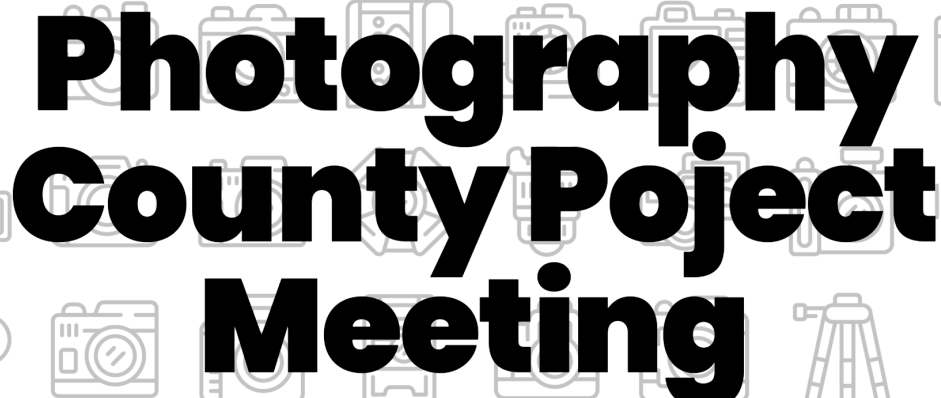
Activities:
Solar Updraft Tower
Tower of Strength
Games
Songs
Meal

Register
Soon!!
Registration
capped at 30!



KANSAS STATE UNIVERSITY IS COMMITTED TO MAKING ITS SERVICES, ACTIVITIES AND PROGRAMS ACCESSIBLE TO ALL PARTICIPANTS. IF YOU HAVE SPECIAL REQUIREMENTS DUE TO A PHYSICAL, VISION, OR HEARING DISABILITY, CONTACT AG AGENT, BEN SIMS, AT 620-583-7455 BY MAY 9TH, 2025. KANSAS STATE UNIVERSITY AGRICULTURAL EXPERIMENT STATION AND COOPERATIVE EXTENSION SERVICE
K-STATE RESEARCH AND EXTENSION IS AN EQUAL OPPORTUNITY PROVIDER AND EMPLOYER.

*BRING YOUR FAVORITE
PHOTO TAKING EQUIPMENT
(Camera or Camera Phone)*



Photography County Project Meeting

April 22 at 5:30 – 7:30pm

at the Hamilton School

RSVP to Alisha, Extension Agent

alisha32@ksu.edu

620-583-7455

This event will include:

- Photo scavenger hunt
- Photo skill stations
- County & State Fair
- photo display application demonstration
- photography Q&A on camera settings, etc.
- Snacks